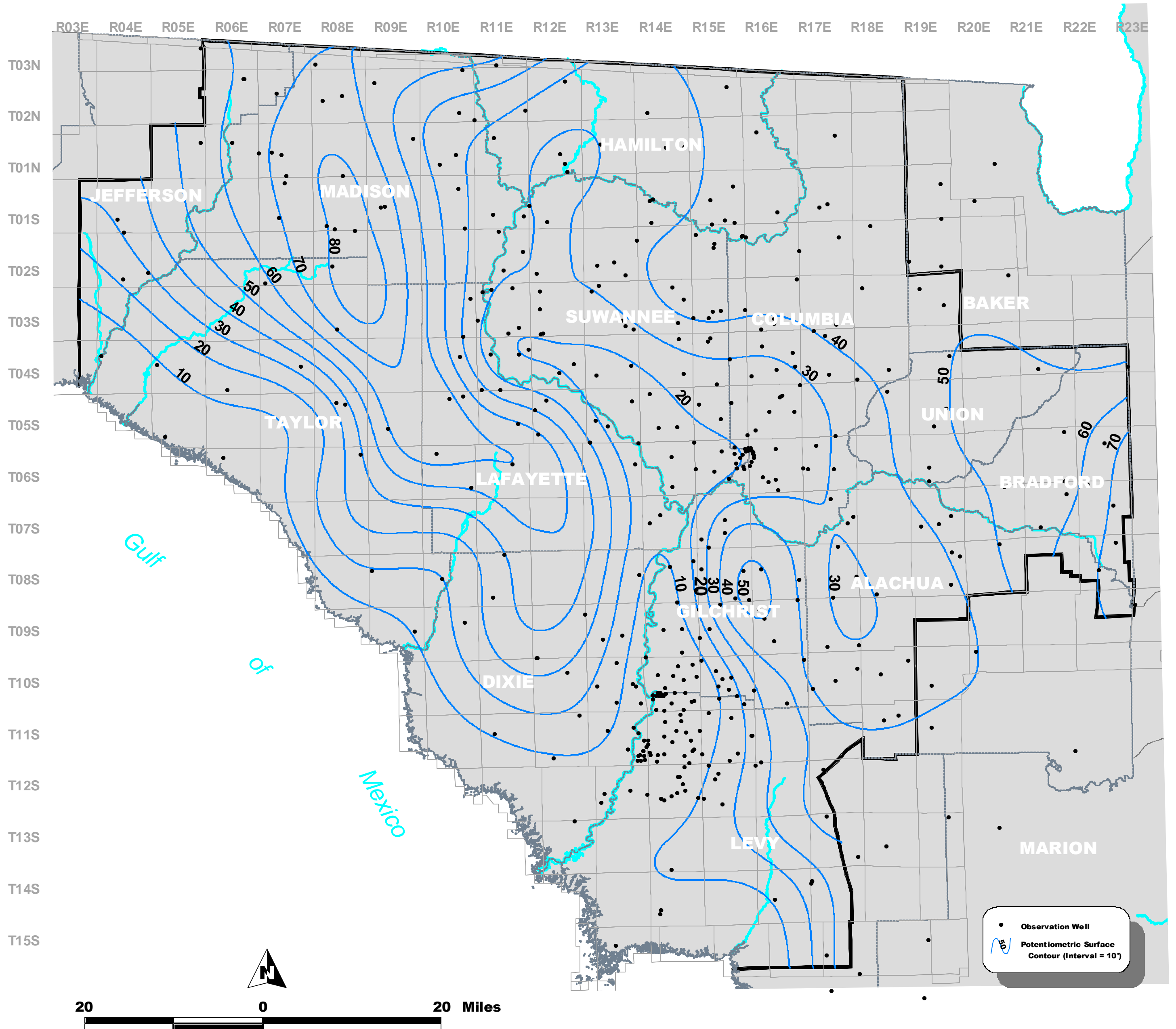
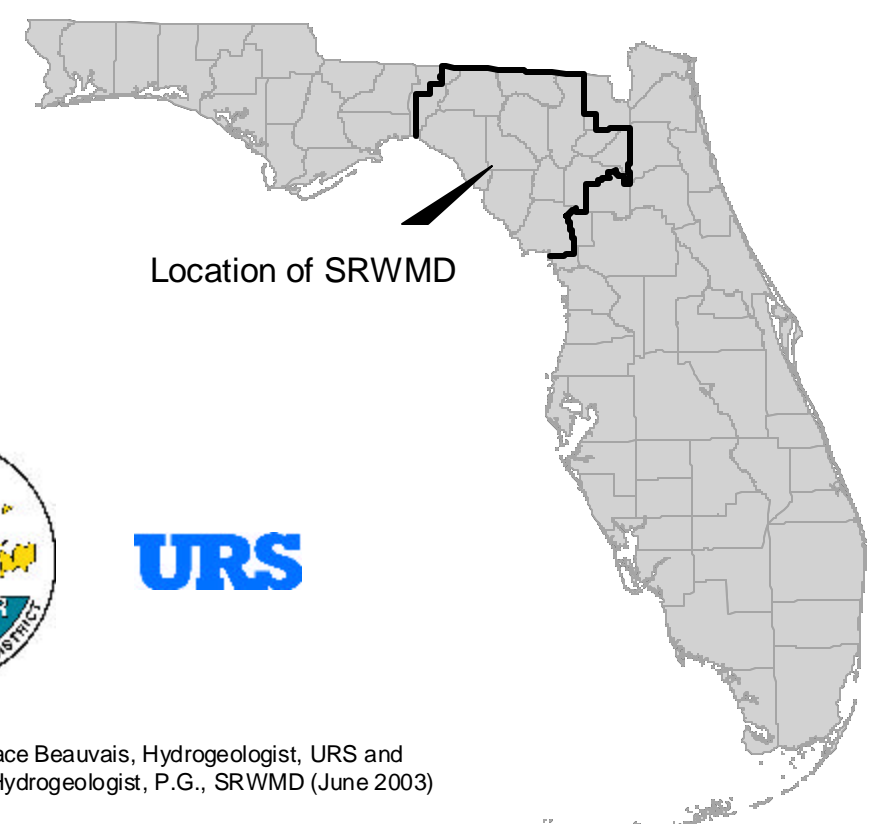


MINIMUM WATER TABLE ELEVATION OF THE UPPER FLORIDAN AQUIFER IN THE SUWANNEE RIVER WATER MANAGEMENT DISTRICT, FLORIDA



The contour lines on this map depict the minimum potentiometric surface of the Floridan aquifer system. The potentiometric surface is the height above mean sea level that the water table would have stood in tightly cased wells and the contours define areas with equal minimum water table elevations. Values represent the lowest elevation recorded at each well from data that has been accumulated from as early as 1973, and do not represent a specific sampling in time. A significant number of record low water table levels were recorded from 1999 to 2002 when much of the District experienced severe drought conditions.



URS

Created by: Candace Beauvais, Hydrogeologist, URS and
Warren Zwanka, Hydrogeologist, P.G., SRWMD (June 2003)